



MAYOR EPOXY ANCHORING

EPOXY ANCHORING ADHESIVE

DESCRIPTION **MAYOR EPOXY ANCHORING** is solvent free, two part adhesive and repair mortar, based on a combination of epoxy resins and special fillers

- USES**
- Most household and building materials including concrete, tile, stone
 - For horizontal and vertical repairs
 - Fills defects in concrete floors, walls, driveways, stairs, and patios
 - Bonds loose or cracked tiles
 - Secures railings or posts
 - Stops air and water leaks
 - For setting anchor bolts, dowels, and rebar in concrete and masonry

- ADVANTAGES**
- High-strength
 - Resists chemicals and solvents
 - Moisture tolerant
 - Fits standard caulking gun
 - Non-shrink
 - Fast-setting
 - Non Sag
 - excellent adhesion

PRODUCT DATA form : Liquid
Mix Ratio: 1 Part A , 1part B by volume
Mix color : Grey
Solid % : 100

Backing 1 kg (A+B) , 5 Kg Available on Request .

Storage Condition store under cover ,out of direct sunlight and protect from extreme temperatures.

shelf life Best when used within 24 months in original, unopened container.



TECHNICAL DATA Density ≈ 1.60 Kg/l (Part A+B) .
Gel-time at room temperature 14 Min
Lap shear strength (steel-steel) 20 MPa
Compressive strength 79 MPa
Flexural strength 56 MPa
Glass transition temperature 96°C
complies with ASTM B 117

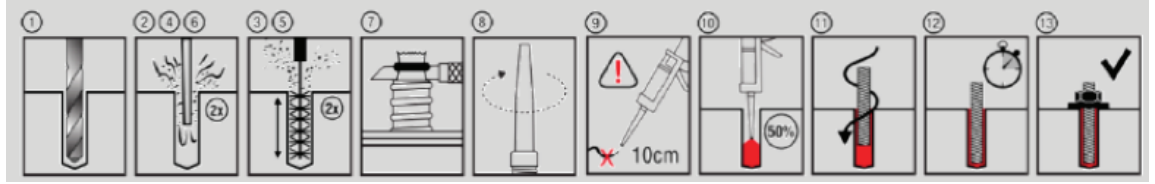
APPLICATION DETAILS Mix A and B together at least for 3 min with mixing spindle until the material become smooth in consistency and uniform grey color.
MIXING Bonding and repairs:
Apply neatly and work into substrate. The glue line should not exceed $\frac{1}{8}$ in. (0.3cm).

ANCHORING Dispense the epoxy into the anchoring hole filling from the bottom up. The annular space around the bolt, dowel or anchor should not exceed $\frac{1}{8}$ in. (0.3 cm). Insert the bolt, dowel, rebar, or rod to be anchored, turning it slowly, making sure all the rods are thoroughly coated. Adjust to the correct position within the stated working time. After insertion, the hole should be completely full of epoxy. Any excess resin should be expelled from the hole evenly around the anchor showing that the hole is full. Excess resin should be removed before it hardens.

CURING The rate of cure is dependent on the amount of material used and the temperature at which it is applied. Gel time is 30 minutes for 1 oz. (30 g) and 14 minutes for 2 oz. (60 g), at 77°F (25°C). At temperatures below 77°F (25°C) this product will take proportionately longer time to cure. At temperatures above 77°F (25°C) it will take a proportionately shorter time to cure. Initial cure in 2 hours. Reaches final cure in 12-16 hours. Allow to cure until the epoxy is hard to the touch.

CLEAN UP Mayor Epoxy Anchoring Epoxy should be wiped clean before it cures, once cured, it can only be mechanically removed. Avoid getting epoxy on skin.

Installation Instructions



LIMITATION

- For professional use only.
- Follow all industry standard safety procedures when handling, such as chemical resistant gloves, eye and skin protection.
- Per NTSB Safety Recommendations, the use of adhesive anchors is prohibited in sustained overhead load anchoring applications.
- Always test a small amount to insure that the product is mixed thoroughly and that the material will harden properly before proceeding.
- Do not thin with solvents.
- Surface and ambient temperature must be 40°F (5°C) or above.

SAFETY

- use suitable clothes , goggles and gloves .
- Keep out of reach of children.
- Read label before use.
- If medical advice is needed, have product container or label at hand.
- Dispose of contents and container in accordance with all local, regional, national and international regulations.